



**GAI-TRONICS® CORPORATION**  
A HUBBELL COMPANY

## 7245-004 Indoor Remote Subset Amplifier Enclosure Quick Installation Guide

### Important Safety Instructions

1. Read, follow, and retain instructions – All safety and operating instructions should be read and followed before operating the unit. Retain instructions for future reference.
2. Heed warnings – Adhere to all warnings on the unit and in the operating instructions.
3. Attachments – Attachments not recommended by the product manufacturer should not be used, as they may cause hazards.

**⚠ WARNING ⚠ Explosion Hazard – Substitution of components may impair suitability for Class 1, Div. 2 usage.**

**⚠ CAUTION ⚠ Do not install this equipment in hazardous areas other than those indicated on the equipment approval list in this manual. Such installation may cause a safety hazard and consequent injury or property damage.**

### General Information and Available Options

This guide covers the installation of the 7245-004 Indoor Remote Subset Amplifier Enclosure, which is intended for use in GAI-Tronics Page/Party® and SmartSeries systems. This enclosure enables the amplifier, speaker, and field cabling of subset stations to be remotely mounted. It is constructed of fabricated steel and is equipped with a 24-position remote subset connector.

Refer to Pub. 42004-644L2 at the “Manuals & Specs” link at [www.gai-tronics.com](http://www.gai-tronics.com) for a list of subsets, system planning guidelines, detailed explanations and warranty.

### Mounting and Connection

**⚠ WARNING ⚠ Do not install this equipment in hazardous areas. Such installations may cause a safety hazard and consequent injury or property damage.**

**NOTE:** The GAI-Tronics subsets designed for use with this enclosure contain 8-foot (244 cm) connectorized cables. This enclosure must be mounted within reach of these cables.

**Mounting** - The 7245-004 Indoor Enclosure is not supplied with openings for conduit or cable. Drill or punch these openings using the supplied template before mounting the enclosure. The best location for the conduit holes is along the top or bottom of the enclosure and near the rear surface. Avoid the top center as it may interfere with the plug-in amplifier receptacle.

There are four 0.312-inch diameter mounting holes in the corners of the amplifier enclosure. See Figure 1 for hole pattern dimensions. When mounting the enclosure, use caution to avoid damaging the terminal blocks inside. Install the connector guard over the remote cable plug using the screws provided as shown in Figure 1 to comply with NRTL requirements.

**Wiring** - Feed the system wiring into the enclosure. Strip the insulation on each conductor of the system cable. Install a ring lug on the ground conductor (GRN/YW wire). The wires must be spade-lugged and connected carefully and completely to the terminal blocks in accordance with the colors indicated in Figure 2. An improper termination may result in diminished station performance.

Feed the speaker wiring into the enclosure. Strip the insulation on each conductor of the speaker cable. Install spade lugs on each conductor. Connect the speaker wires of an 8-ohm speaker between the TB1-4 (speaker common) and TB1-5 (8-ohm) or connect the speaker wires of a 16-ohm speaker between the TB1-4 (speaker common) and TB1-6 (16-ohm).

1. Set the speaker muting control to the desired location. Refer to the Local Muting and Mutual Muting sections for details.
2. Plug the subset connector into the J2 receptacle located at the bottom of the enclosure. Secure the connector with the connector guard and screws provided. See Figure 1.
3. Insert the plug-in amplifier into the J1 receptacle of the enclosure and secure the amplifier with four screws.

The following table lists some hints to aid technicians in troubleshooting:

Problem	Solution
Feedback occurs only during page.	Use the muting feature in the amplifier enclosure at the terminal blocks. Connect the violet wire at terminal 8 to terminal 7, or reposition the speaker. In some cases, the speaker of a nearby station may have to be repositioned.
Crosstalk occurs.	One or more system cable pairs may be improperly terminated or a fault exists somewhere else in the system. Visually inspect the system cable connections for accidental crossing of the cable pairs or grounds.

7245-004 Indoor Remote Subset Amplifier Enclosure Quick Installation Guide

Problem	Solution
Remote subset is inoperable.	<ul style="list-style-type: none"> <li>• Verify that the connector of the remote subset is securely connected to the subset receptacle of the enclosure.</li> <li>• Remove the amplifier from the enclosure. Re-install the amplifier ensuring the enclosure connector and the amplifier connector are aligned properly.</li> </ul>
Auxiliary inputs do not operate.	<ul style="list-style-type: none"> <li>• Remove the amplifier and verify the lugged auxiliary input wires are properly terminated on terminal points TB1-10 and TB1-11 respectively.</li> <li>• Verify the auxiliary inputs have been enabled in the system software.</li> </ul>

Approval .....NRTL certified for use in US and Canada .....Class I, Div. 2, Groups A, B, C, D

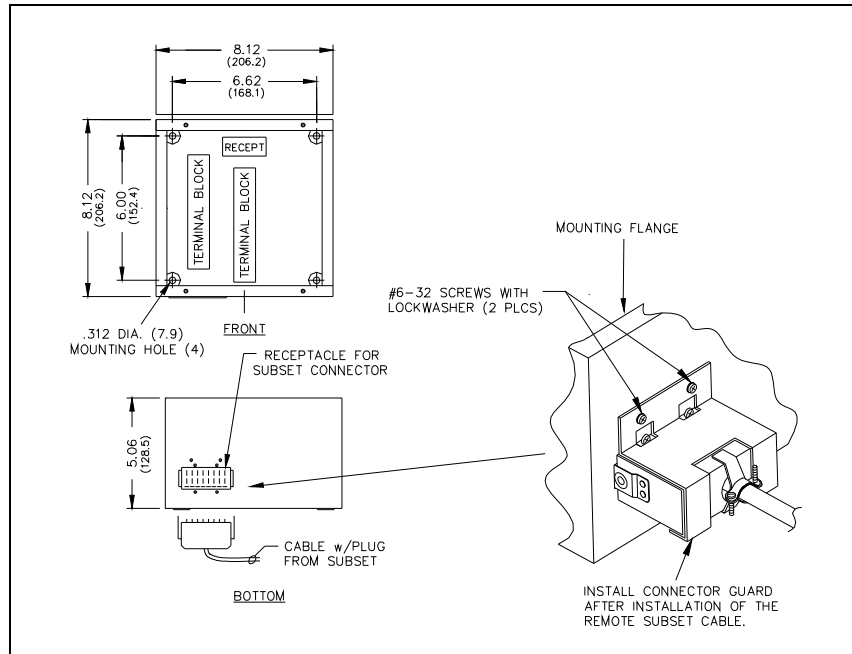


Figure 1. Outline and Connection Detail

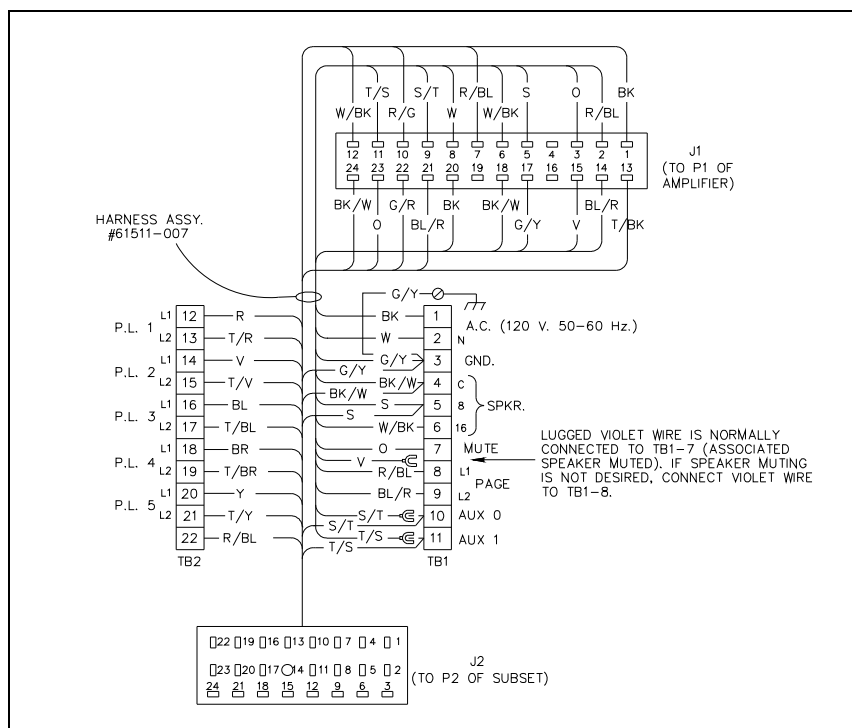


Figure 2. Wiring Details

# Warranty

---

Equipment. GAI-Tronics warrants for a period of one (1) year from the date of shipment, that any GAI-Tronics equipment supplied hereunder shall be free of defects in material and workmanship, shall comply with the then-current product specifications and product literature, and if applicable, shall be fit for the purpose specified in the agreed-upon quotation or proposal document. If (a) Seller's goods prove to be defective in workmanship and/or material under normal and proper usage, or unfit for the purpose specified and agreed upon, and (b) Buyer's claim is made within the warranty period set forth above, Buyer may return such goods to GAI-Tronics' nearest depot repair facility, freight prepaid, at which time they will be repaired or replaced, at Seller's option, without charge to Buyer. Repair or replacement shall be Buyer's sole and exclusive remedy. The warranty period on any repaired or replacement equipment shall be the greater of the ninety (90) day repair warranty or one (1) year from the date the original equipment was shipped. In no event shall GAI-Tronics warranty obligations with respect to equipment exceed 100% of the total cost of the equipment supplied hereunder. Buyer may also be entitled to the manufacturer's warranty on any third-party goods supplied by GAI-Tronics hereunder. The applicability of any such third-party warranty will be determined by GAI-Tronics.

Services. Any services GAI-Tronics provides hereunder, whether directly or through subcontractors, shall be performed in accordance with the standard of care with which such services are normally provided in the industry. If the services fail to meet the applicable industry standard, GAI-Tronics will re-perform such services at no cost to buyer to correct said deficiency to Company's satisfaction provided any and all issues are identified prior to the demobilization of the Contractor's personnel from the work site. Re-performance of services shall be Buyer's sole and exclusive remedy, and in no event shall GAI-Tronics warranty obligations with respect to services exceed 100% of the total cost of the services provided hereunder.

Warranty Periods. Every claim by Buyer alleging a defect in the goods and/or services provided hereunder shall be deemed waived unless such claim is made in writing within the applicable warranty periods as set forth above. Provided, however, that if the defect complained of is latent and not discoverable within the above warranty periods, every claim arising on account of such latent defect shall be deemed waived unless it is made in writing within a reasonable time after such latent defect is or should have been discovered by Buyer.

Limitations / Exclusions. The warranties herein shall not apply to, and GAI-Tronics shall not be responsible for, any damage to the goods or failure of the services supplied hereunder, to the extent caused by Buyer's neglect, failure to follow operational and maintenance procedures provided with the equipment, or the use of technicians not specifically authorized by GAI-Tronics to maintain or service the equipment. **THE WARRANTIES AND REMEDIES CONTAINED HEREIN ARE IN LIEU OF AND EXCLUDE ALL OTHER WARRANTIES AND REMEDIES, WHETHER EXPRESS OR IMPLIED BY OPERATION OF LAW OR OTHERWISE, INCLUDING ANY WARRANTIES OF MERCHANTABILITY OR FITNESS FOR A PARTICULAR PURPOSE.**

## Return Policy

---

If the equipment requires service, contact your Regional Service Center for a return authorization number (RA#). Equipment should be shipped prepaid to GAI-Tronics with a return authorization number and a purchase order number. If the equipment is under warranty, repairs or a replacement will be made in accordance with the warranty policy set forth above. Please include a written explanation of all defects to assist our technicians in their troubleshooting efforts.

Call 800-492-1212 (inside the USA) or 610-777-1374 (outside the USA) for help identifying the Regional Service Center closest to you.